

**nwC**2013  
NAFEMSWORLDCONGRESS

Incorporating the 1st

**spdm**  
INTERNATIONAL CONFERENCE  
Simulation Process & Data Management

# A Smart SDM-Solution for Automotive Suppliers

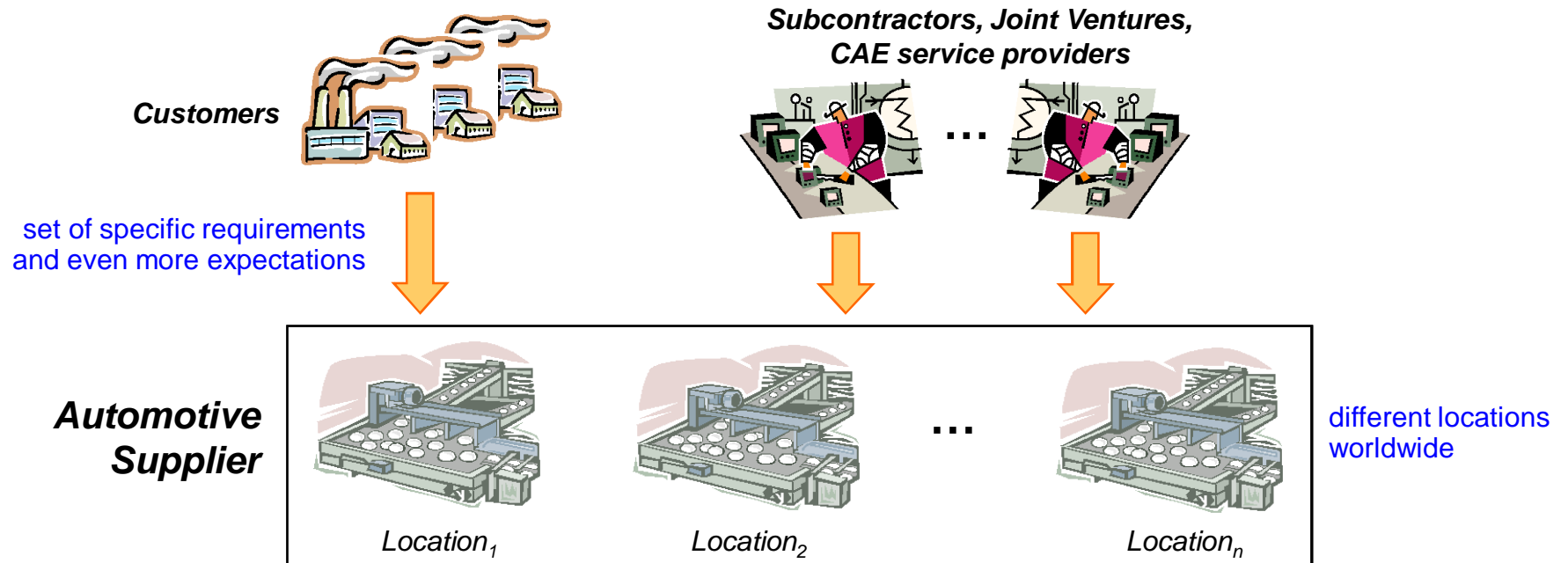
Dr. Günter Staub, Dr. Alexander  
Mahl PD Tec AG



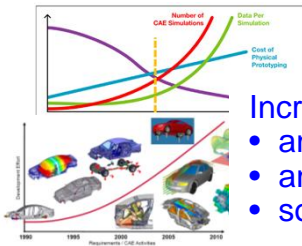
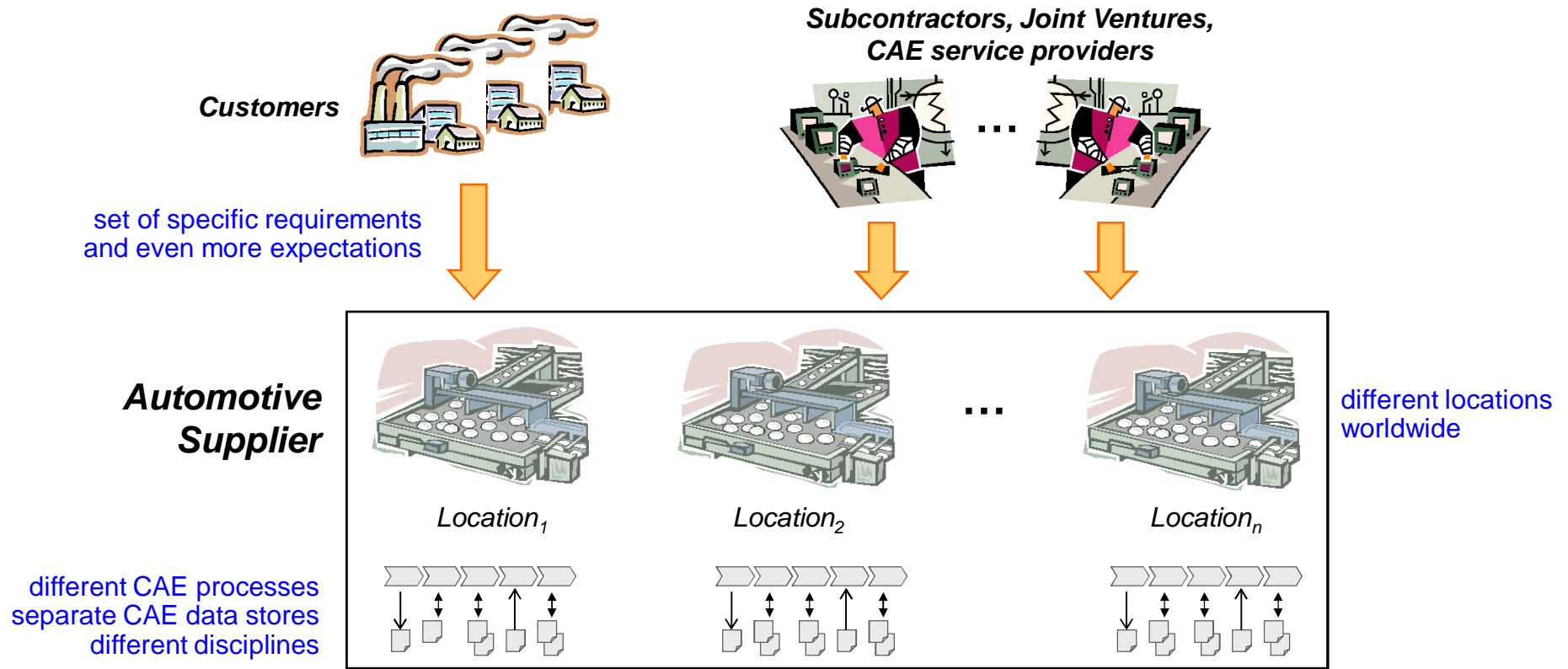
# Contents

- Motivation
  - Challenges for automotive suppliers
  - Resulting requirements for SDM
  - Outline of a SDM solution
- SimData Manager – A smart SDM solution for automotive suppliers
  - Overview
  - Process scope and data clusters
  - Feature highlights
  - Benefits
- Summary and Conclusions

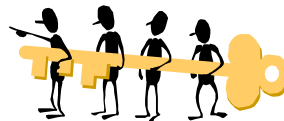
# Typical Challenges for an Automotive Supplier



# Typical Challenges for an Automotive Supplier



- Increasing No. of
- analysis methods
  - analysis tools
  - solver runs/iterations



Harvesting of synergies across

- multiple CAE projects,
- multiple locations, and
- multiple CAE disciplines is hard to achieve



Comparatively small IT budget (compared to those of OEMs)



# Resulting Requirements for SDM from an Automotive Supplier Perspective (1)

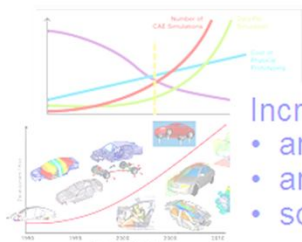
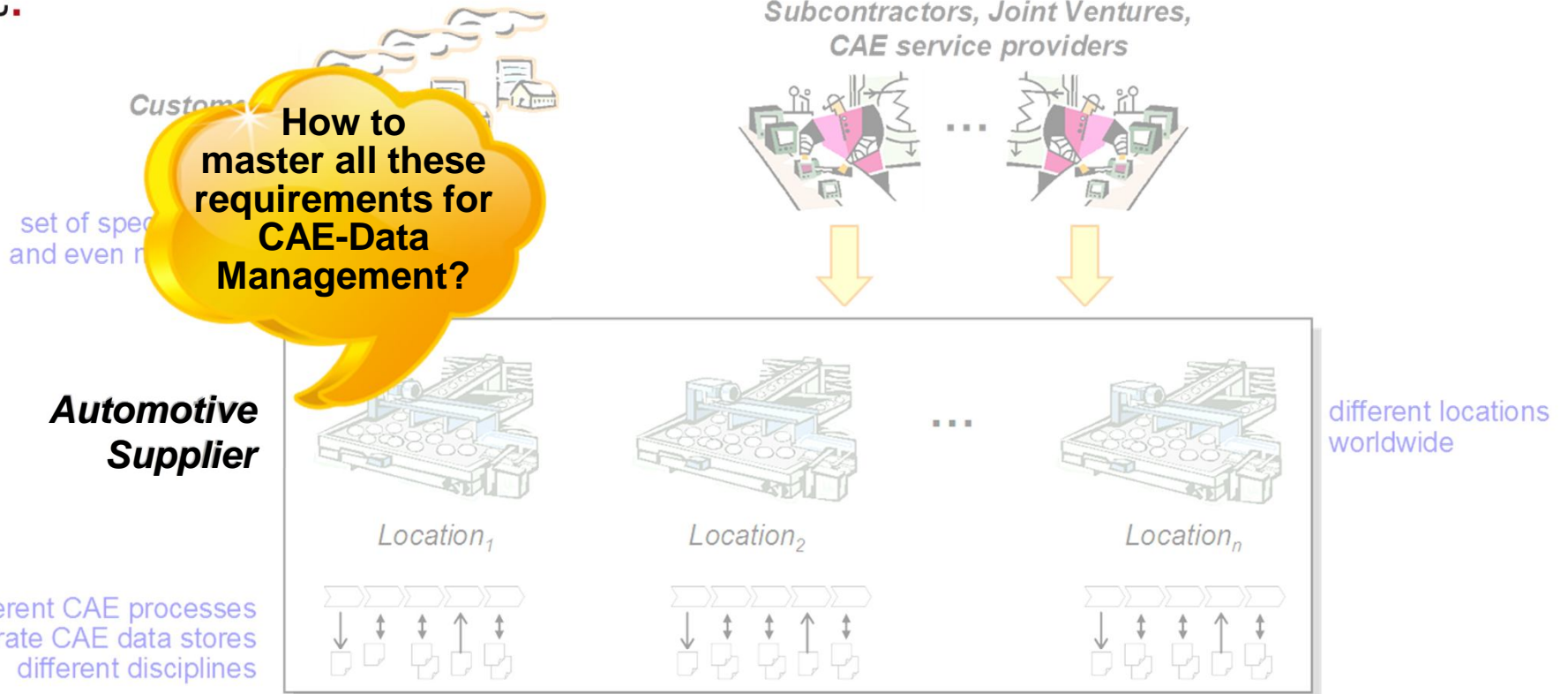
- Seamless integration of multiple locations, multiple OEMs, multiple CAE disciplines, sub-suppliers and joint ventures
- Coverage of the different customer requirements regarding CAE data within a single SDM solution
- Coverage of the entire CAE process chain as well as of parts of it
  - existing CAE processes and workflows should be covered
  - ability for integration of the existing tools, in house scripts, etc. and extensibility



# Resulting Requirements for SDM from an Automotive Supplier Perspective (2)

- Central CAE data organization without redundancy, incl. versioning, suitable for all in-house simulation disciplines
  - reuse of existing CAE data (meshes, includes, results, etc.) across projects, locations, and customers
- Traceability: from CAE data to associated input data (e.g. CAD) and vice versa
- Out of the Box Solution for CAE process and data management without huge customizing costs

# Typical Challenges for an Automotive Supplier



Increasing No. of

- analysis methods
- analysis tools
- solver runs/iterations



Harvesting of synergies across

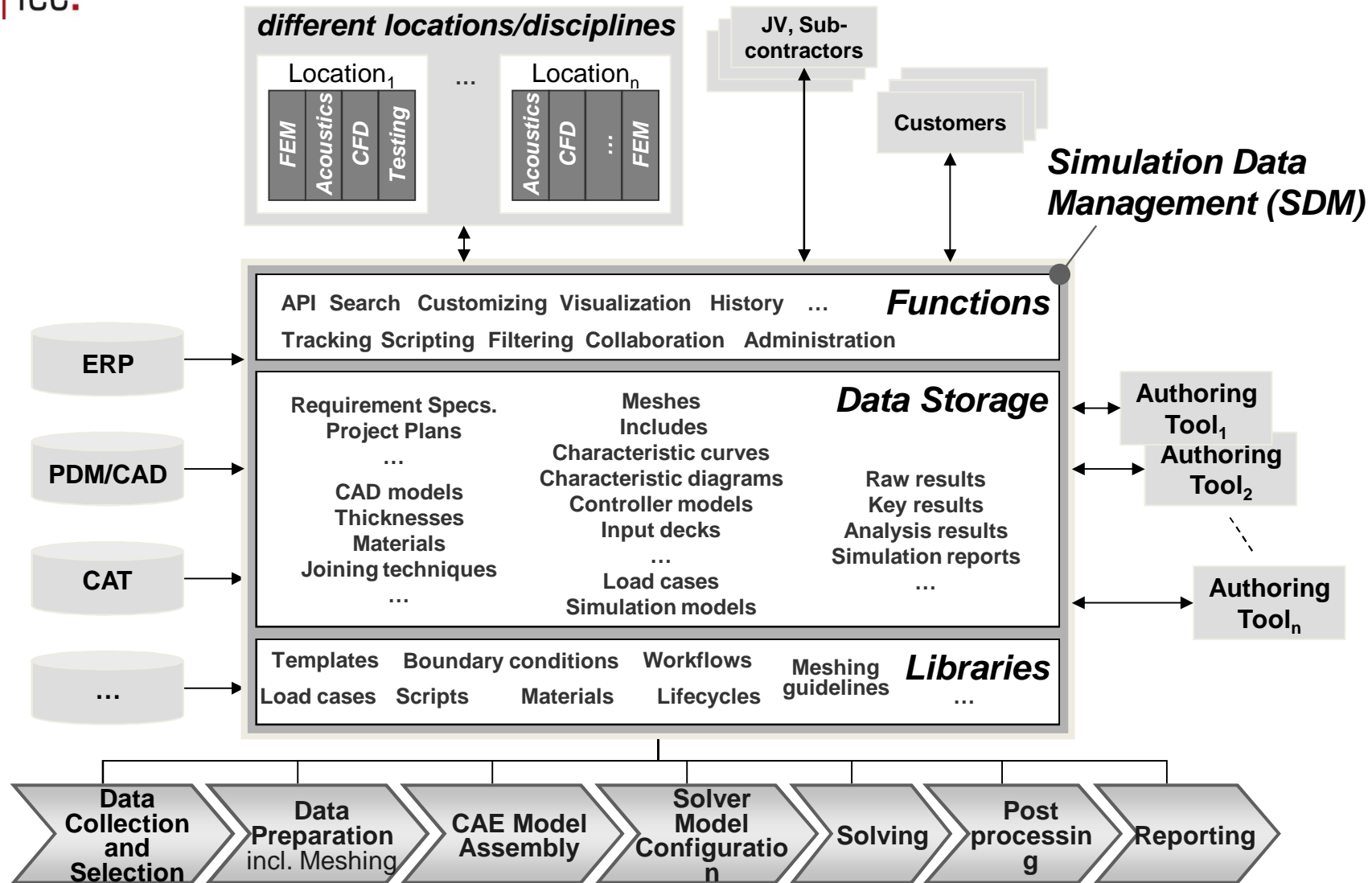
- multiple CAE projects,
- multiple locations, and
- multiple CAE disciplines is hard to achieve



Comparatively small IT budget (compared to those of OEMs)



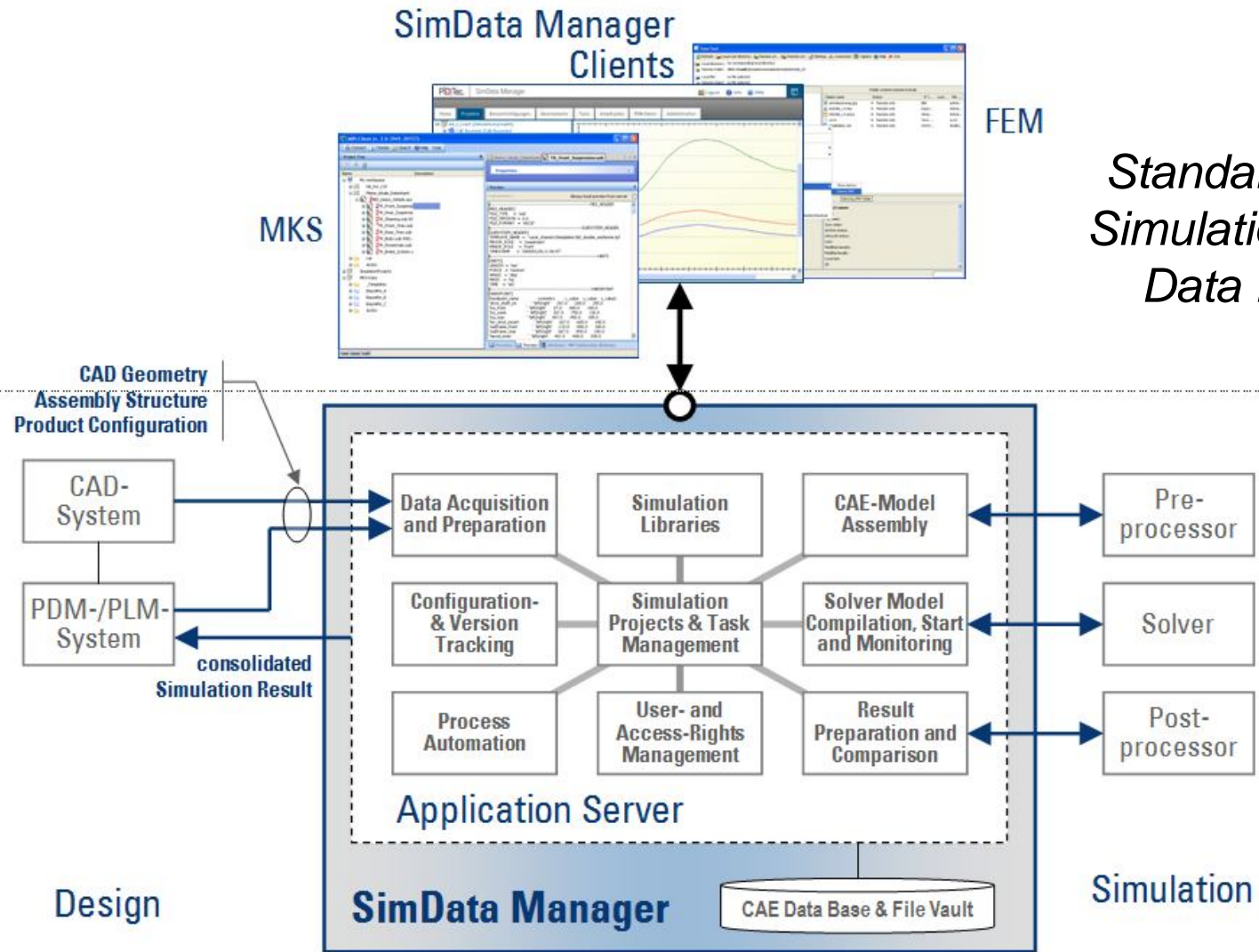
# Solution Approach that meets the Requirements







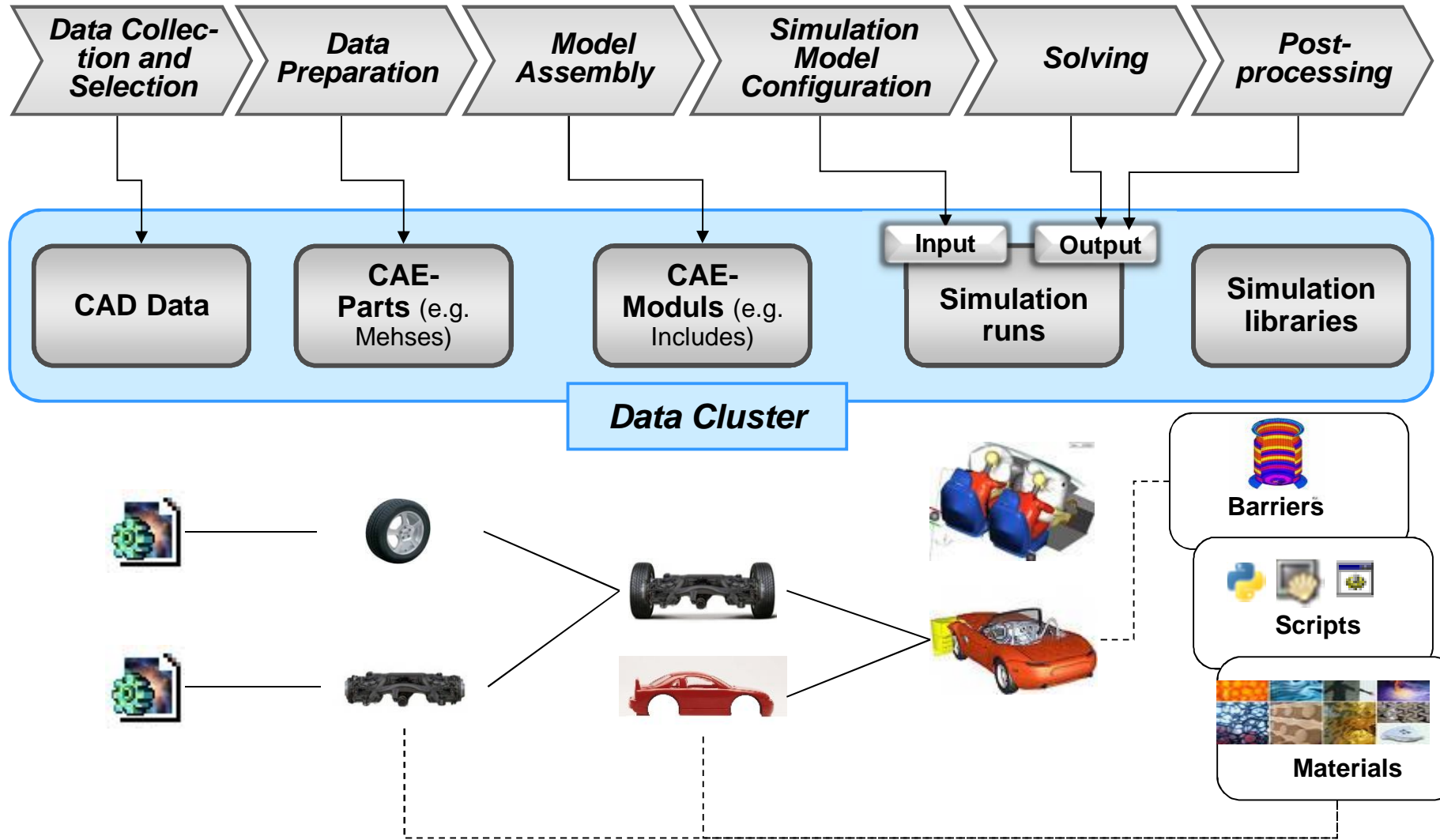
# PD Tec's SimData Manager



*Standard Software for Simulation Process and Data Management*



# Process Scope and Data Clusters of SimData Manager





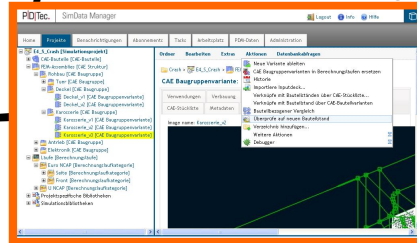
# Existing PDM Interfaces for the Import of CAD/PDM-Data for the SimData Manager

- OEM specific interfaces for the import of PDM data
  - Daimler: import on the basis of Smaragd/STEP data
  - Porsche: csv-file import from P-DMU
  - Audi: import based on meta data file from KVS/VPM
  - Other OEM's: in preparation
- Standard interfaces
  - CSV Interface
  - PLMXML, STEP (different dialects)
  - Native CATIA, native NX
  - ENOVIA
- Mapping tools for dealing with import of proprietary PDM data formats



# Way of Working with SimData Manager (FEM view)

**SDM Cockpit** (Web Browser, e.g. Firefox or IE)



download

upload

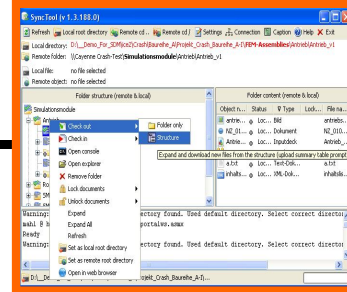
e.g. Meshing,  
Model assembly  
with CAE-Tool (e.g.  
Ansa, Medina, ...)



e.g. Solver run

e.g. Post processing  
& Report compilation

**SDM Sync-Tool**

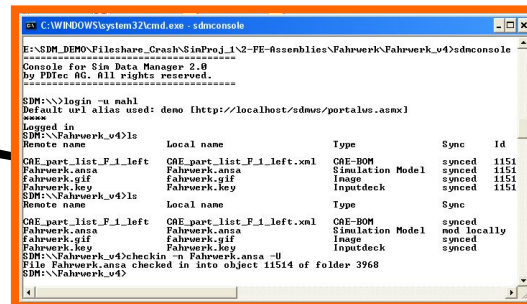


check-out

check-in

local  
work space  
(of CAE Engineer)

**SDM Console**



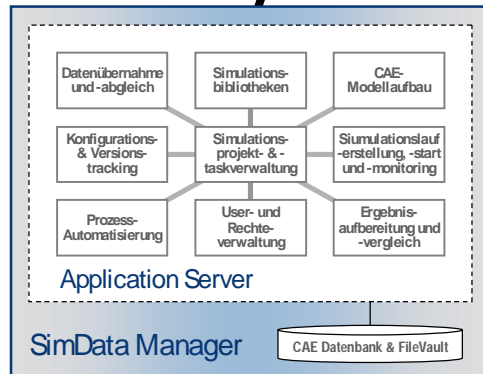
check-in

check-out

https

Web-Services

Web-Services



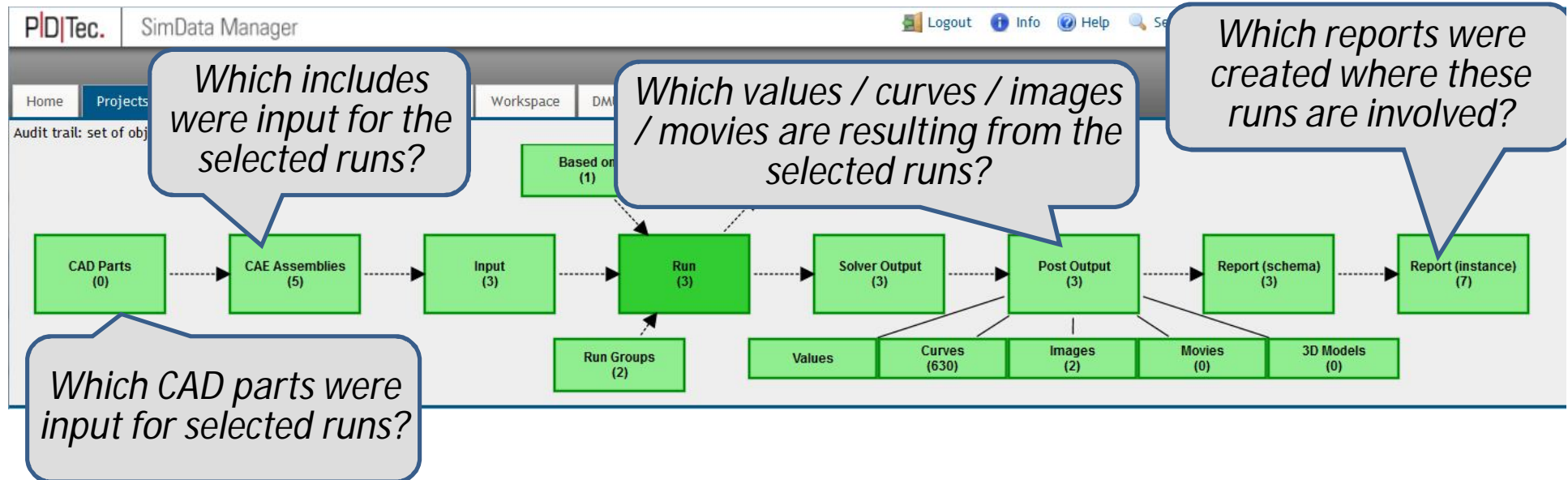
**SimData  
Manager**



# Example: Trace Line of CAE Data within the SimData Manager

- Analyze the input and/or output of one or more simulation runs
- Select one or more runs and get needed information with one click

Run	Name	Changed on	Changed by
Run-001	1/10/2013 11:02:29 AM	John	1
Run-002	6/17/2013 9:12:18 AM	John	4
Run-003	4/29/2013 8:28:58 AM	John	4
Run-004	5/28/2013 11:42:18 AM	John	4
Run-005	5/18/2013 3:24:18 AM	John	5
Run-006	5/28/2013 11:12:24 AM	John	5



- Trace line visualization is configurable in order to fit specific customer needs



# Easy Comparison of Curves, etc.

SimData Manager

Logout Info Help Search (global) Filter Remove selection

Home Projects Notification Subscription Archiving Workspace DMU data MBS Workflows Administration

Audit trail: set of objects [hide][close]

```
graph LR; CADParts["CAD Parts (0)"] -.-> CAEAssemblies["CAE Assemblies (5)"]; CAEAssemblies -.-> Input["Input (3)"]; Input -.-> Run["Run (3)"]; Run -.-> SolverOutput["Solver Output (3)"]; SolverOutput -.-> PostOutput["Post Output (3)"]; PostOutput -.-> ReportSchema["Report (schema) (3)"]; ReportSchema -.-> ReportInstance["Report (instance) (7)"]; Run --- RunGroups["Run Groups (2)"]; Run --- Values["Values"]; Run --- Curves["Curves (630)"]; Run --- Images["Images (2)"]; Run --- Movies["Movies (0)"]; Run --- 3DModels["3D Models (0)"]; BasedOn["Based on (1)"] -.-> Run; BaseFor["Base For (2)"] -.-> Run;
```

Proj\_123\_Akustik [Simulation Project]

- INCLUDES [CAE Structure]
- Rechnungen [Runs]
  - Category\_A [Run Category]
    - Run 001 [Run]
      - Input [Input]
      - Output [Output]
    - Run 002 [Run]
    - Run 003 [Run]
    - Run 004 [Run]
    - Run 005 [Run]
    - Run 006 [Run]
  - Project specific simulation libraries
  - Classification
  - Clipboard



PID|Tec. SimData

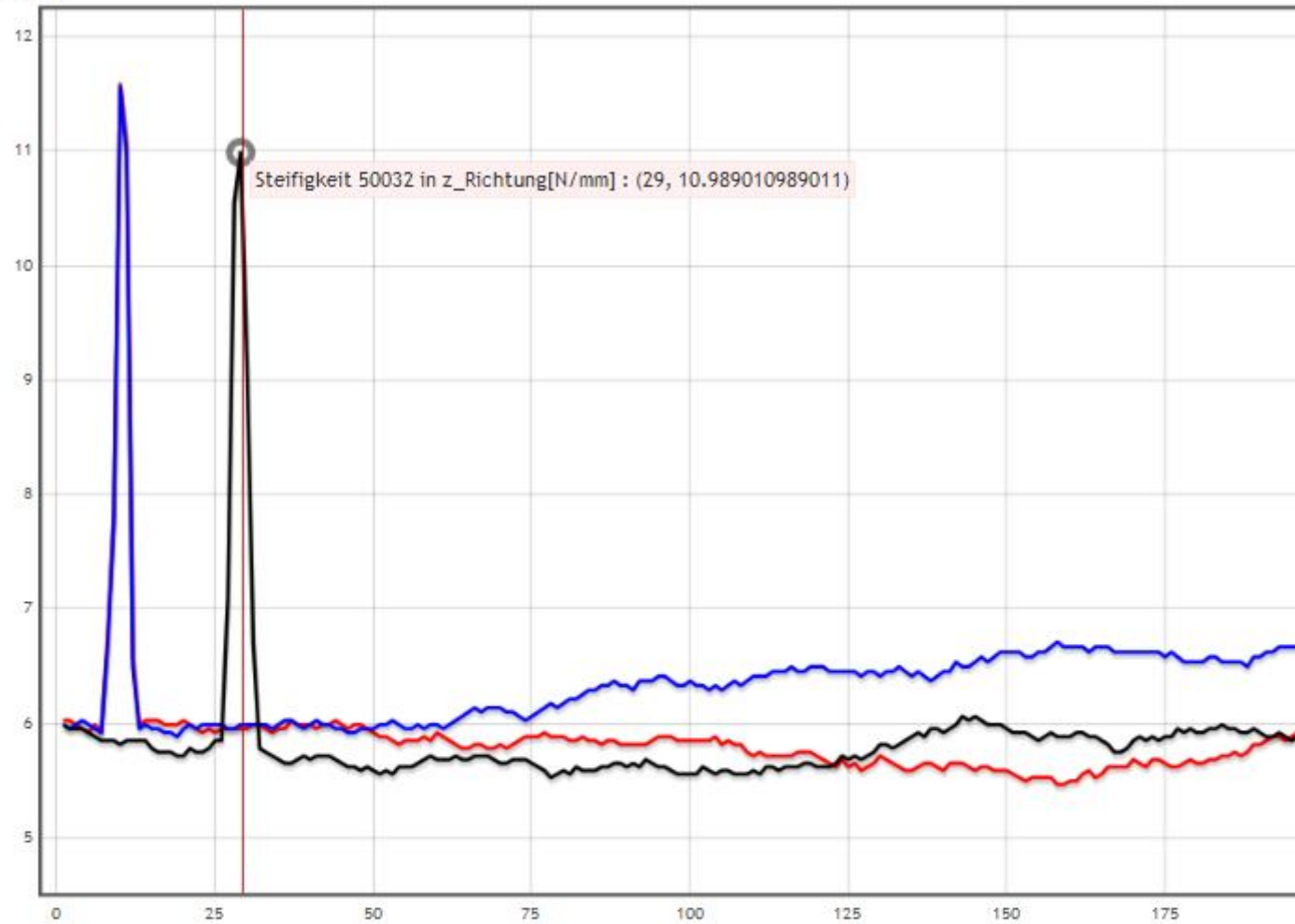
Home Projects Noti

Audit trail: set of objects

CAD Parts  
(0)

- Proj\_123\_Akustik [Simu]
- INCLUDES [CAE Struc]
- Rechnungen [Runs]
- Category\_A [Run]
- Run 001 [Ru]
- Input [Inpu]
- Output [Ou]
- Run 002 [Ru]
- Run 003 [Ru]
- Run 004 [Ru]
- Run 005 [Ru]
- Run 006 [Ru]
- Project specific simu
- Classification
- Clipboard

[Open in Zed Graph](#) [Open in new window](#) [Different colours for each curve](#) [Toggle dashes](#)  
[Reset](#)



Run Legend:

Run 001

■ Steifigkeit 50032 in z\_Richtung[N/mm]= 5.95238

Run 002

■ Steifigkeit 50032 in z\_Richtung[N/mm]= 5.98802

Run 003

■ Steifigkeit 50032 in z\_Richtung[N/mm]= 10.5213

Remove selection

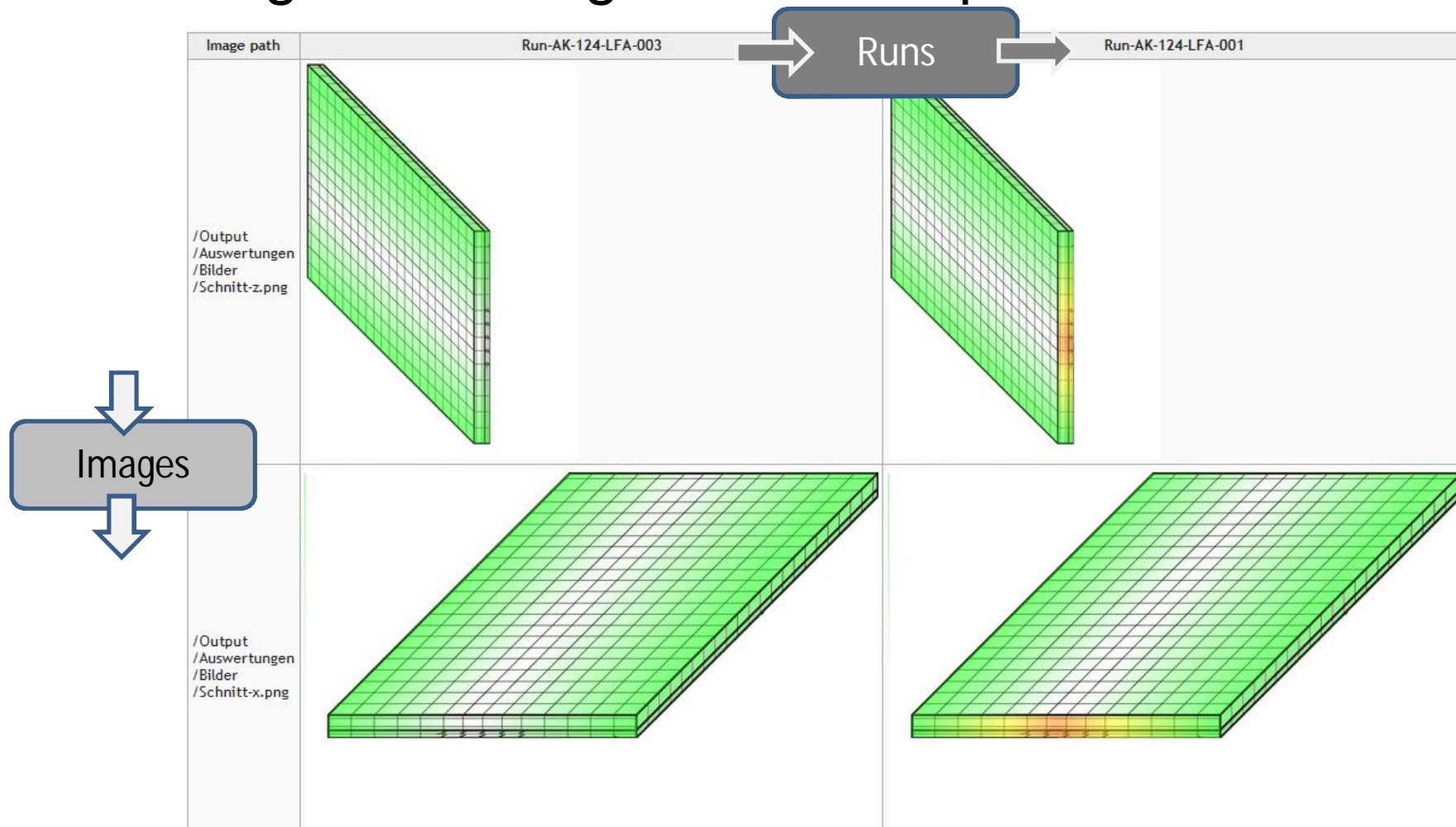
[hide][close]

Report (instance)  
(7)

Description

# Or compare images ...

- Analogue handling to start comparison



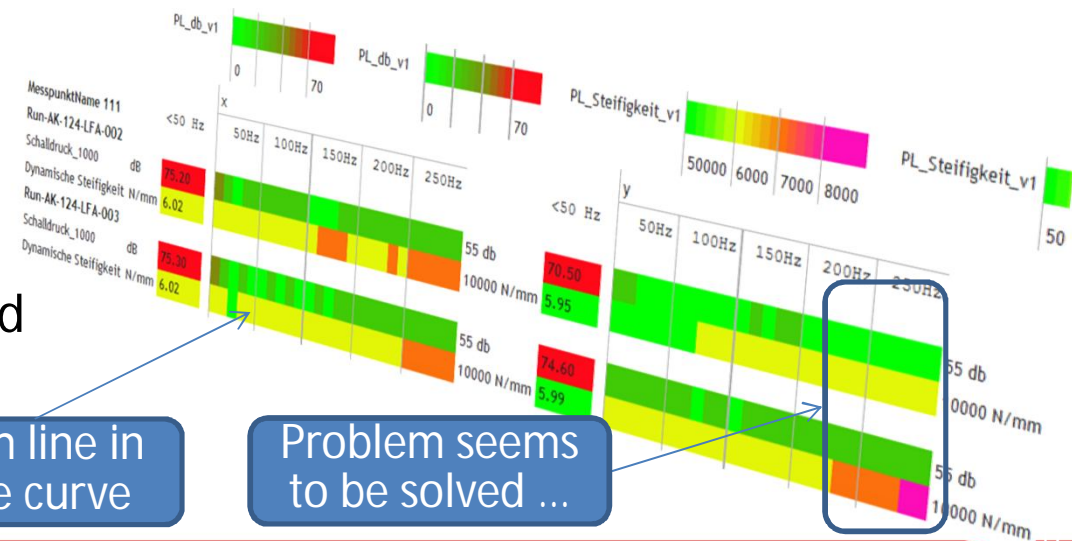
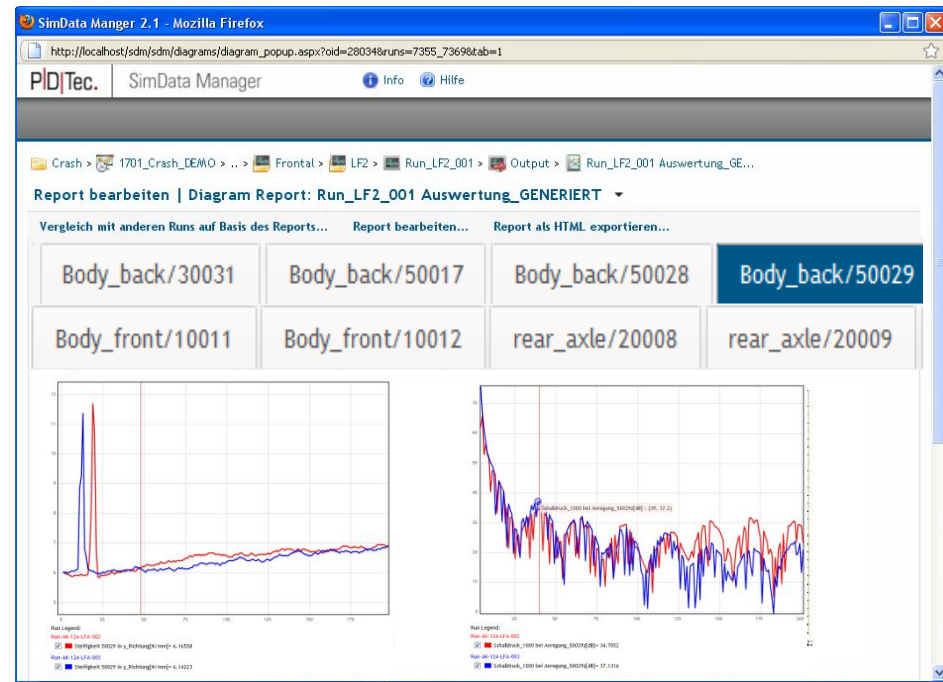




PID Tec.

# API and GUI for Definition of (Standard-)Reports

- GUI Editor and XML-API for definition of reports
- Comparison of multiple simulation runs based on report definition
- Several diagram types are supported
  - bar chart
    - for scalar values and tables
  - curve diagram
  - threshold analysis: compare many curves against threshold and see progress over time

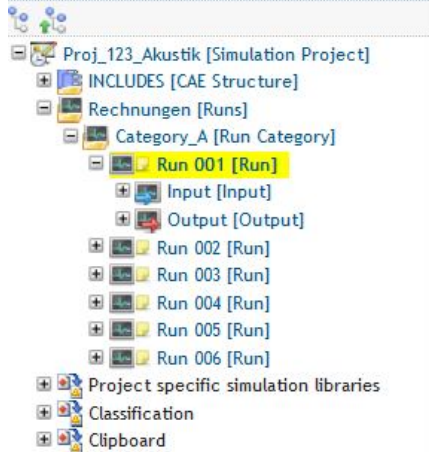
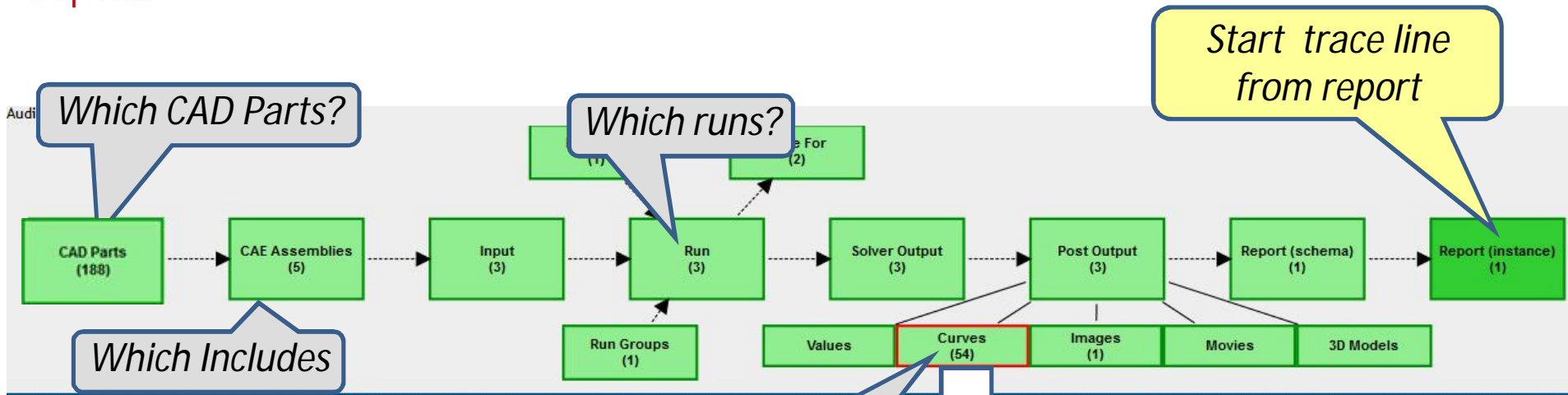


Each line in one curve

Problem seems to be solved ...



# Traceability: From Report to Runs (curves, images), Includes, and even CAD





# Feature Highlights of SimData Manager (1)

- SDM Sync-Tool for easy data synchronization between SDM and local work space
- SDM Console: use of the SimData Manager through the command shell
- Fast access to large files enabled by SDM View-Vault
- Comparison of simulation model variants, solver models and key results
  - graphical and tabular, incl. export to MS Excel
- Viewing & geometrical comparison of CAD geometries
- Python-API: automation of customer specific process steps and provision as SDM functionality (→ add to the menu)



## Feature Highlights of SimData Manager (2)

- Transparent, bidirectional connection between CAD and CAE world
  - trace back to the input data (e.g. CAD data), that was used as the basis for a simulation result
  - find the simulation models that may need an update due to a change in input data (e.g. CAD geometry)
- Intelligent rule based assignment of CAD models to CAE nodes
- Easy definition of solver models by drag & drop
- Report generation engine
- Generic archiving mechanism
- Definition of lifecycle for SDM objects (e.g. release life cycle)
- Automation of tasks through build in workflow engine



## Benefits (Excerpt)

- Reduced effort for information provision, for model assembly and for generation of reports
- Synergies provided by an uniform data storage organization, even across different simulation disciplines (e.g. crash, aero dynamics)
  - potential for in-house standardization
- Improved transparency and higher quality of the simulation process
  - immediate traceability of the simulation results
- Saving significant time in the simulation department
- Simple deployment within the company through usage of modern web technologies
- Straightforward integration of different locations as well as of external partners
  - CAE service providers, Subcontractors, Joint Ventures



# Summary and Conclusions

- Tough challenges for Automotive suppliers
  - many varying requirements needs to be addressed by CAE departments of Automotive suppliers
- SimData Manager is a standard software for the efficient and professional management of simulation processes and data
  - provides many out of the box features and functionalities, including interfaces to PDM systems
  - if necessary: can be easily adapted and extended by skilled users of the CAE department
  - cost effective solution with respect to
    - license costs, customization, operation and maintenance of the software
  - high-power solution with respect to
    - effectiveness, efficiency, and harvesting synergies
- Allows to master the Challenge of CAE-Data Management for Suppliers

Prozess- Know-how  
und Beratung

Standard  
Softwarelösungen

Standard  
Integrationsplattform

**Details about the  
SimData Manager  
at our booth**

**P|D|Tec.**

**Thank you  
for your attention**



Dr.-Ing. Günter Staub  
Dr.-Ing. Alexander Mahl

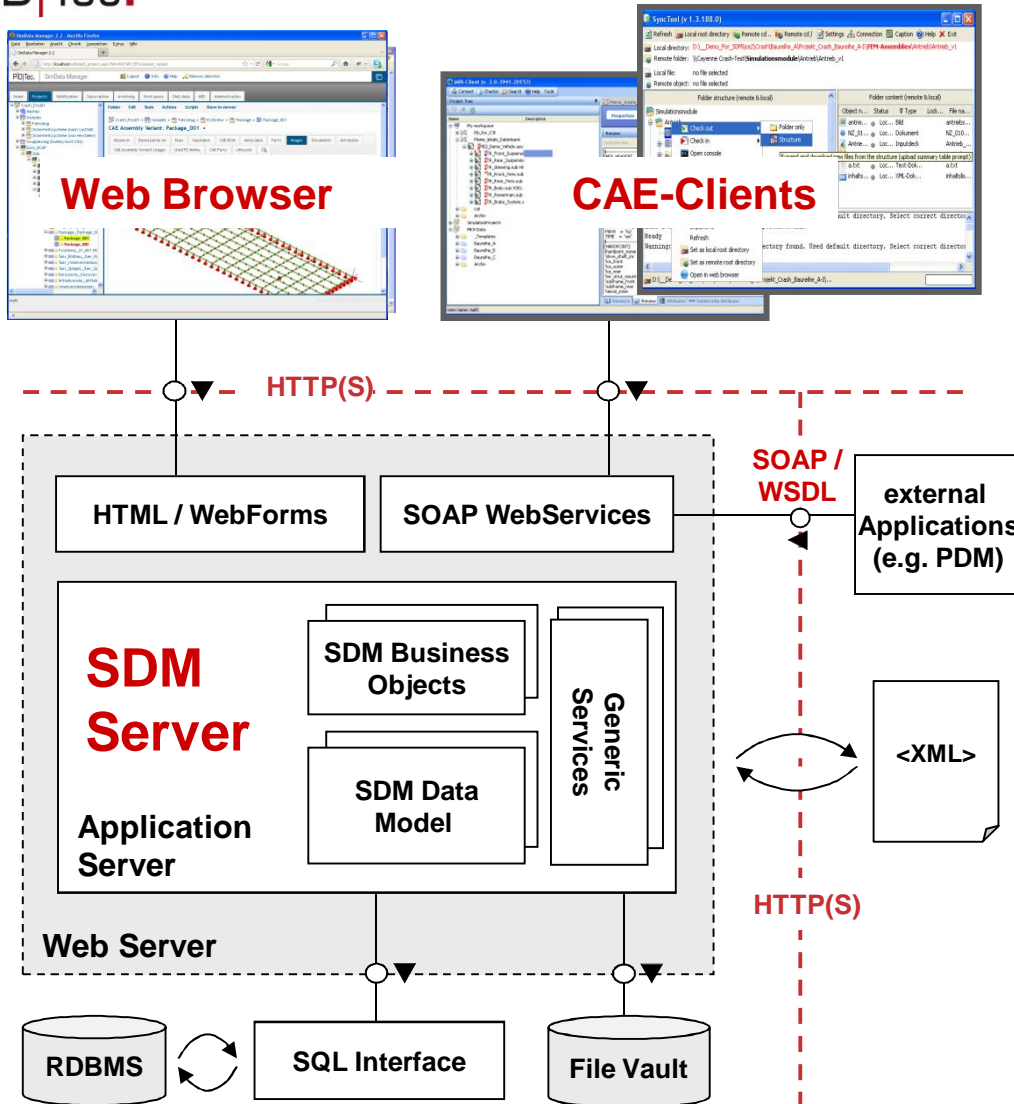
NAFEMS World Congress 2013 – Salzburg, Austria  
June 9-12 2013





PID|Tec.

# Principle System Architecture



- Service oriented (SOA)
- SDM Application Server
- User Interface
  - Web-Browser (over http(s)) and/or
  - Rich Clients (using SOAP)
- Integration
  - external applications (e.g. PDM) through SOAP
  - office tools (Excel, Word, ...)
- Storage of the managed CAE data
  - ORACLE or MS SQL Server
  - one or more file vaults for the storage of the native CAE data